

**HEALTH CARE PATIENTS**

**Total Patients:** 46,809

**Age Groups**

- Women Under 20: 7,877
- Women 20-30: 22,437
- Women Over 30: 9,149
- Men Under 20: 717
- Men 20-30: 4,403
- Men Over 30: 2,216

**Health Insurance Status**

- Uninsured: 63%
- Insured: 37%

**Gender**

- Women: 84%
- Men: 16%

**HEALTH SERVICES**

**Total Visits:** 121,416

**Family Planning**

- Birth Control: 147,473
- Pregnancy Testing & Information: 11,554

**Cancer Screenings**

- Breast & Testicular Exams: 26,637
- Pap Smears: 4,235
- HPV Vaccines: 246

**STD Screenings**

- Chlamydia: 18,859
- Gonorrhea: 18,859
- HIV: 4,065

**Other Services**

- Abortion: 2,091
- Vasectomy: 103

**EDUCATION PROGRAMS**

**Total Participants:** 8,635

**Age Groups**

- Elementary School: 4,893
- Middle School: 731
- High School: 1,425
- College: 367
- Adults Over 25: 1,219

**Presentations by Setting**

- Community Organizations: 174
- Justice System: 115
- School/After School: 249
- Substance Abuse Programs: 36
- Government Agencies: 19

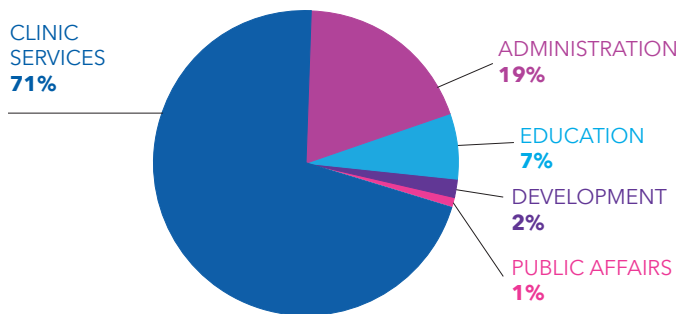
**Participants by Race**

- White/Caucasian: 46%
- Latino/Hispanic: 29%
- Multiracial: 12%
- Asian/Pacific Islander: 8%
- African American/Black: 5%

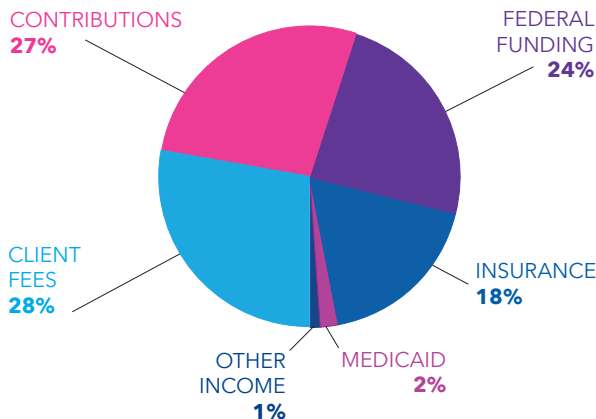
**WE SPEND OUR RESOURCES ON HEALTH CARE**

*All financial information from FY2015.*

**EXPENSES:**



**REVENUES:**



**STATEWIDE HEALTH CENTERS**

